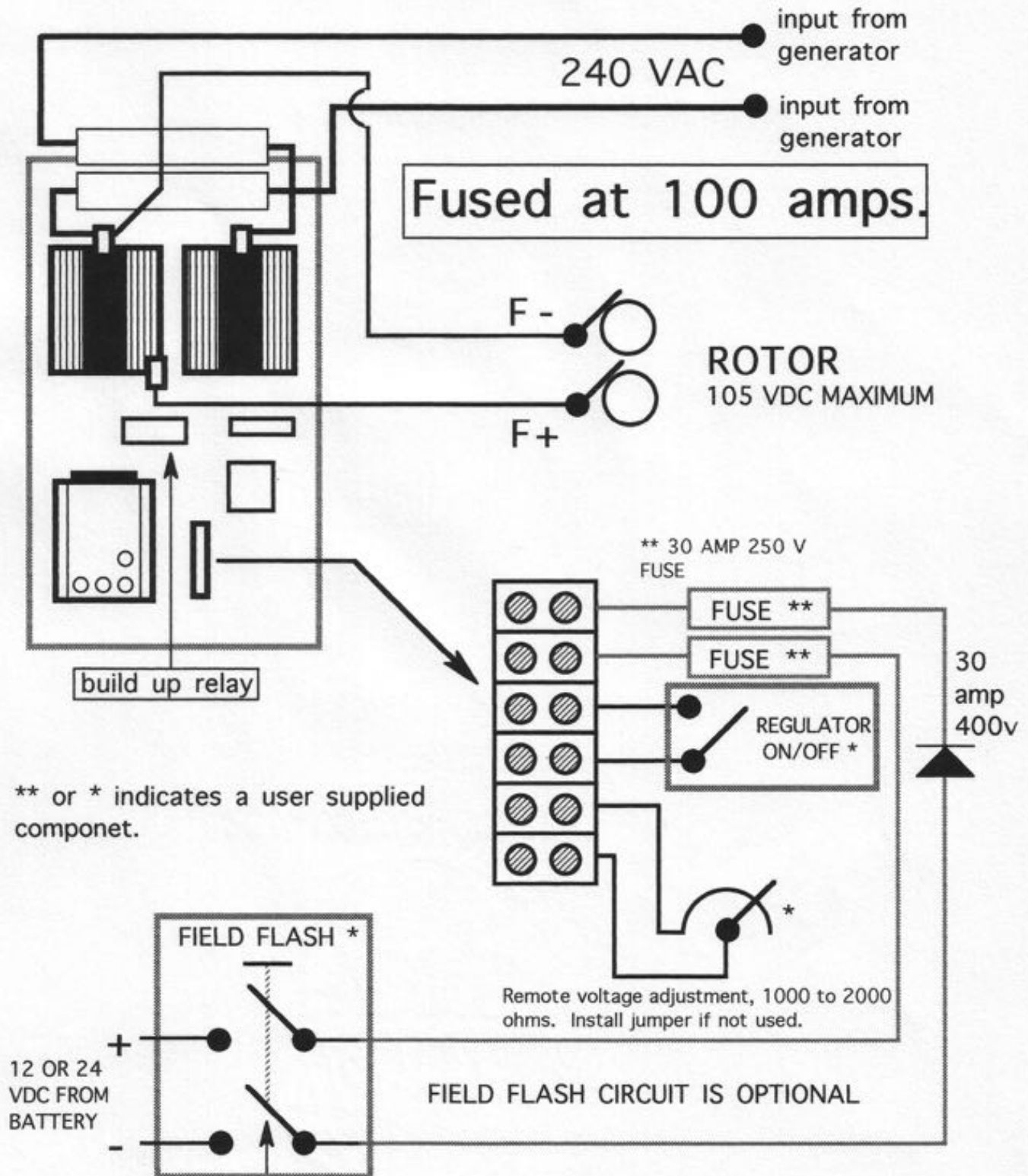


STATIC EXCITER 150HE-100

240V 60 HZ 150A



POWER-TRONICS, INC. CORPUS CHRISTI, TX

START UP INSTRUCTIONS

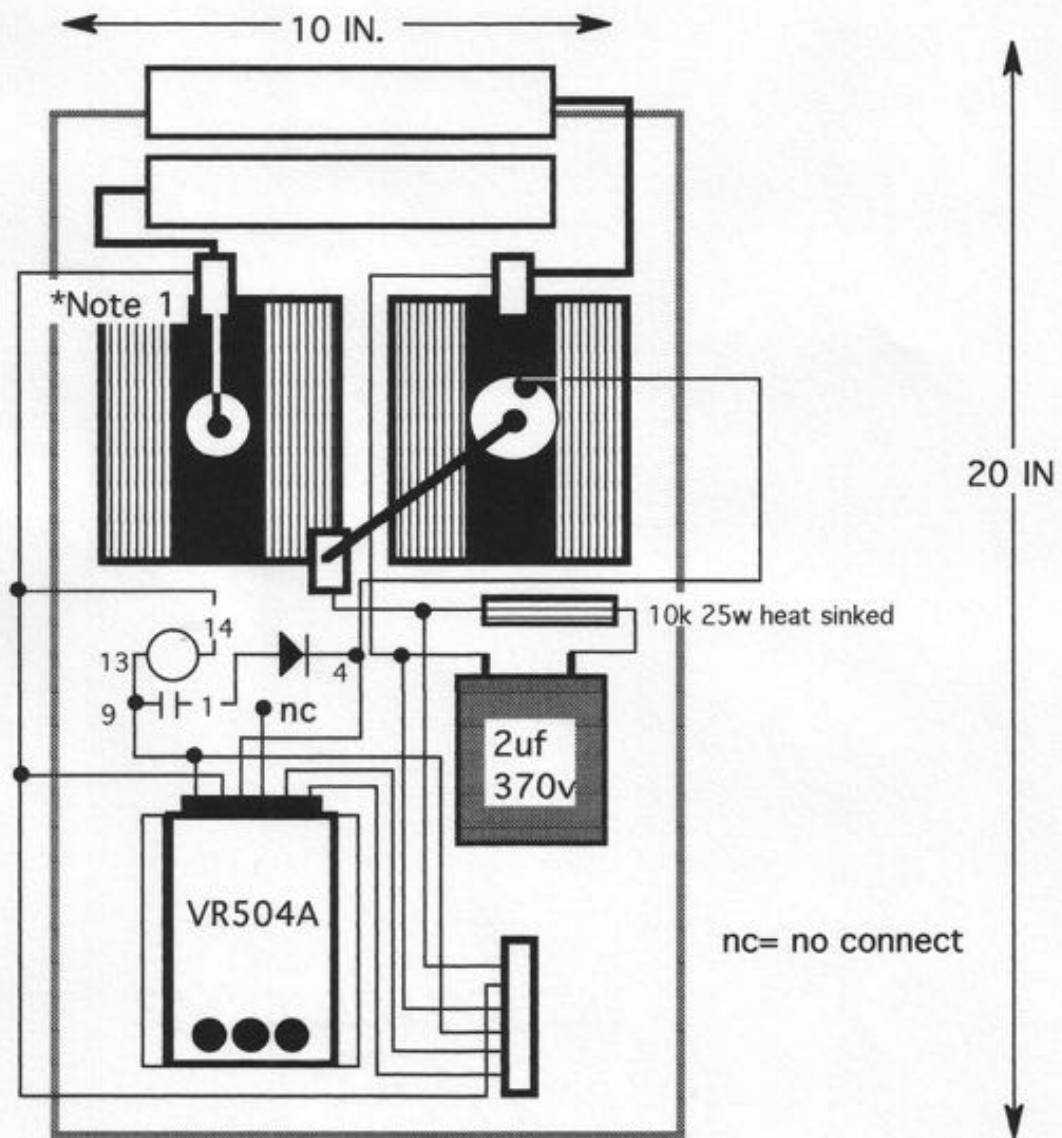
1. Check all wiring and confirm that all is correct.
2. Refer to the VR504A installation instructions for initial set up of the voltage regulator.
3. Turn regulator switch to off position.
4. Start engine and after warm up, bring up to operating speed.
5. Turn on regulator switch.
6. (THIS UNIT IS PROVIDED WITH A BUILD UP RELAY) We recommend not using this relay unless the generator will not build up due to the generator's residual voltage being too low. To eliminate the build up relay circuit, simply unplug the build up relay and discard. If this unit is going to be used without the build up relay, Complete set up as per the VR504A instructions.

IF THIS UNIT IS GOING TO USE THE BUILD UP RELAY: When the regulator switch is turned on, the voltage will be pulsing to about 150 vac. Follow the VR504A instructions and slowly turn the P1 adjustment CW until the steady pulsing becomes erratic and the voltage is within 80% of desired voltage. Complete set up as per the VR504A instructions.

IF THE FLASH CIRCUIT IS USED: Remove the build up relay and discard. *USE ONLY AN ISOLATED DC POWER SOURCE* to flash the fields and use a normally open 2 pole spring loaded push button switch.

Flash the fields just long enough for the voltage to increase to about 75 vac. Be sure that the engine is running at rated speed. Once the fields have been flashed, the voltage should be about 36 vac and erratic. Complete set up as per the VR504A instructions.

7. For shut down, turn off regulator switch before idling engine.



NOTE 1:

